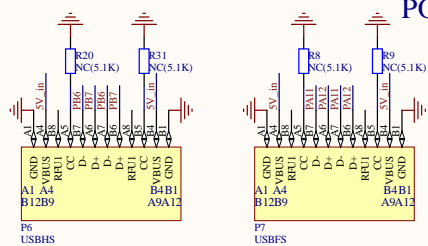
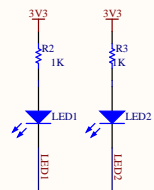
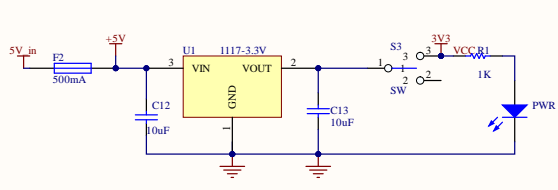


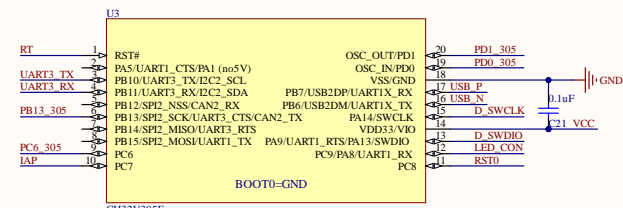
CH32V307/CH32F207/CH32V303/CH32F203VC



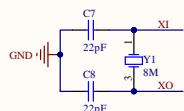
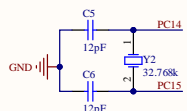
POWER&USB

WCH_LinkE

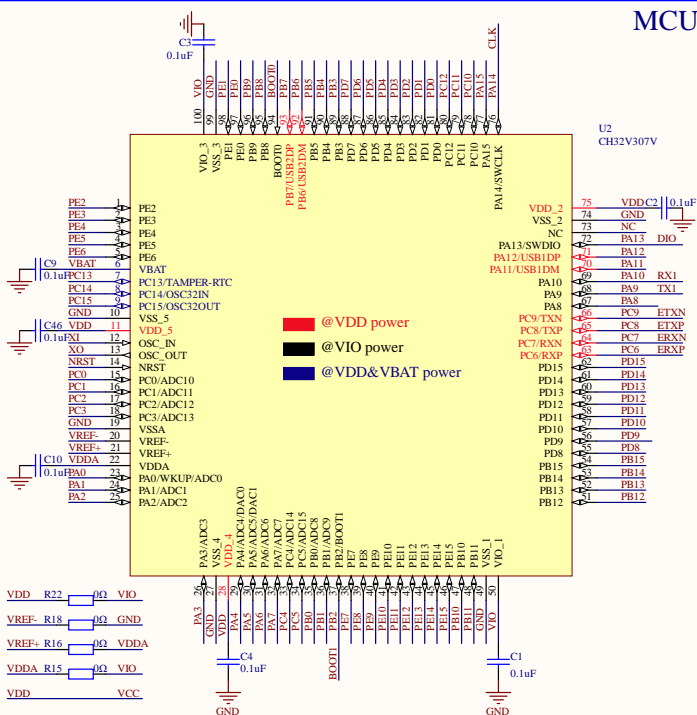
MCU



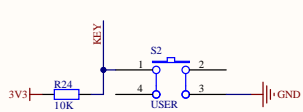
XTAL



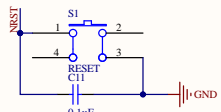
MCU



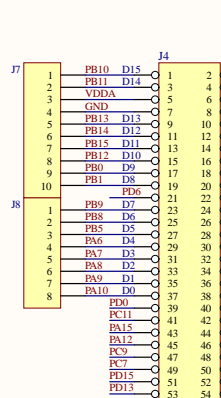
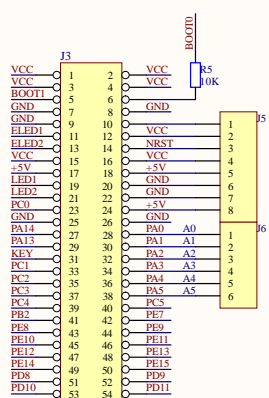
KEY



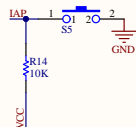
RST



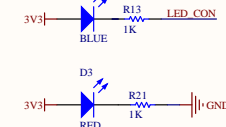
ARDUINO



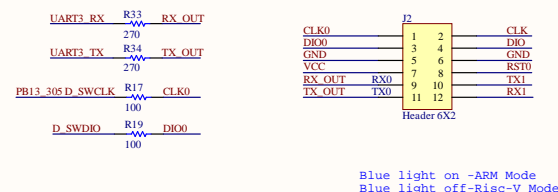
IAP



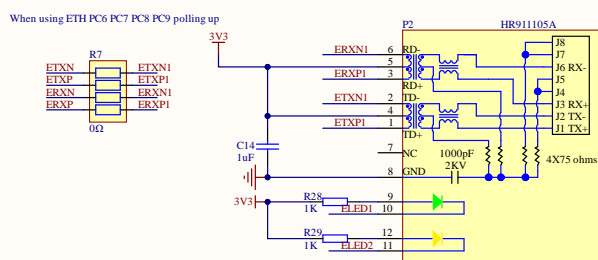
LED



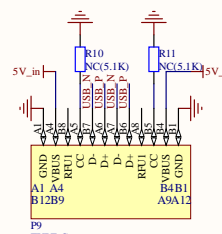
SWD&UART

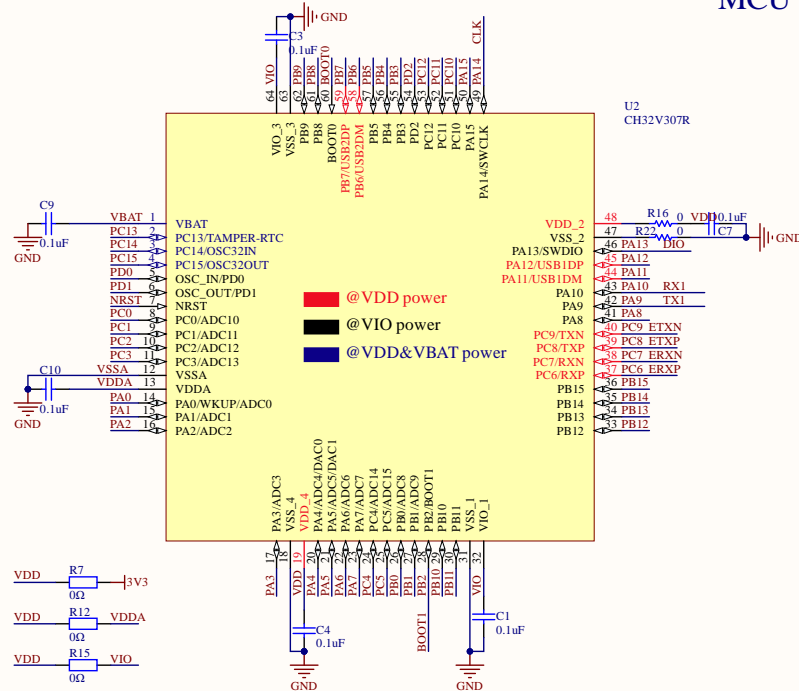


ETH



POWER&USB



[illegible][illegible]

The image contains two circuit diagrams. The left diagram, labeled 'IAP', shows a microcontroller pin connected to a 10K resistor (R14) to VCC and a switch (S5) to GND. The right diagram shows two LEDs, BLUE (D2) and RED (D3), connected to a 3V3 supply. Each LED has a 1K resistor (R13 and R21) in series with its anode, and its cathode is connected to GND. The label 'LED CON' is present near the BLUE LED circuit.

Pin connections for the Raspberry Pi 4B:

- UART3_RX (R20) connected to RX_OUT (270 ohm resistor)
- UART3_TX (R34) connected to TX_OUT (270 ohm resistor)
- PB13_305 D_SWCLK (R17) connected to CLK0 (100 ohm resistor)
- D_SWDIO (R19) connected to DIO0 (100 ohm resistor)

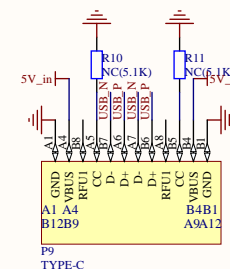
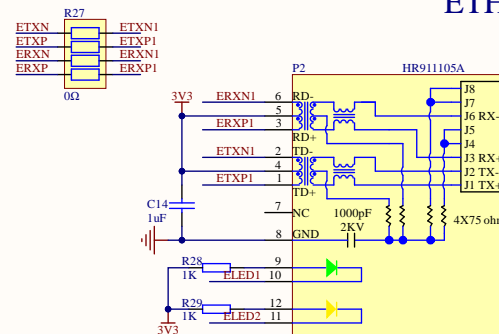
Header J2 connections (6x2):

Header Pin	Header Pin	Header Pin	Header Pin	Header Pin	Header Pin
CLK0	1	2	CLK0		
DIO0	3	4	DIO0		
GND	5	6	GND		
VCC	7	8	VCC		
RX_OUT	9	10	RX_OUT		
TX_OUT	11	12	TX_OUT		

Header J2 is a 6x2 header.

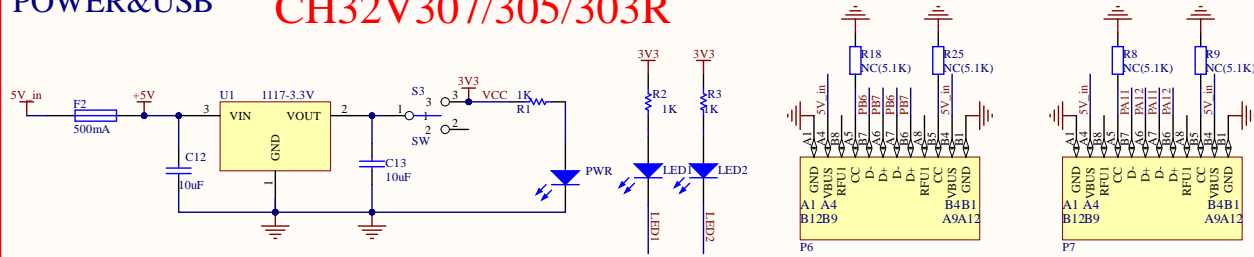
Blue light on -ARM Mode
Blue light off-Risc-V Mode

J3				J7				J4			
VCC	1	2			PB10	D15			PC0		
VCC	3	4			PB11	D14	1	2	PC1		
BOOT1	5	6			VDDA		3	4	PC2		
GND	7	8			GND		5	6	+5V		
PD2	9	10			PB13	D13	7	8	PC3		
LED1	11	12			PB14	D12	9	10	PC4		
LED2	13	14			PB15	D11	11	12	PC5		
KEY	15	16			PB12	D10	13	14	PC6		
ELED2	17	18			PB0	D9	15	16	PC7		
GND	19	20			PB1	D8	17	18	VIO		
GND	21	22				PC8	19	20	PC9		
ELED1	23	24			PA8	D7	21	22	PC10		
PA14	25	26			PB9	D6	23	24	PC11		
PA13	27	28			PB8	D5	25	26	PC12		
PA12	29	30			PB7	D4	27	28	PC13		
PA11	31	32			PB6	D3	29	30	VSSA		
VBAT	33	34			PB4	D2	31	32	PB5		
PA7	35	36			PA9	D1	33	34	PB3		
PA6	37	38			PA10	D0	35	36	PB2		
							37	38			



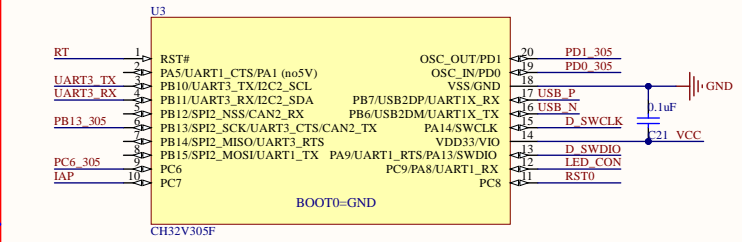
POWER&USB

CH32V307/305/303R



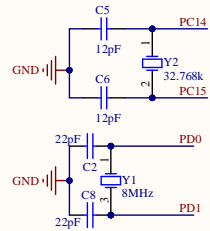
WCH_LinkE

MCU

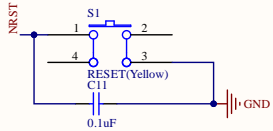


XTAL

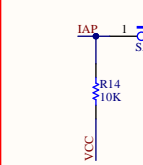
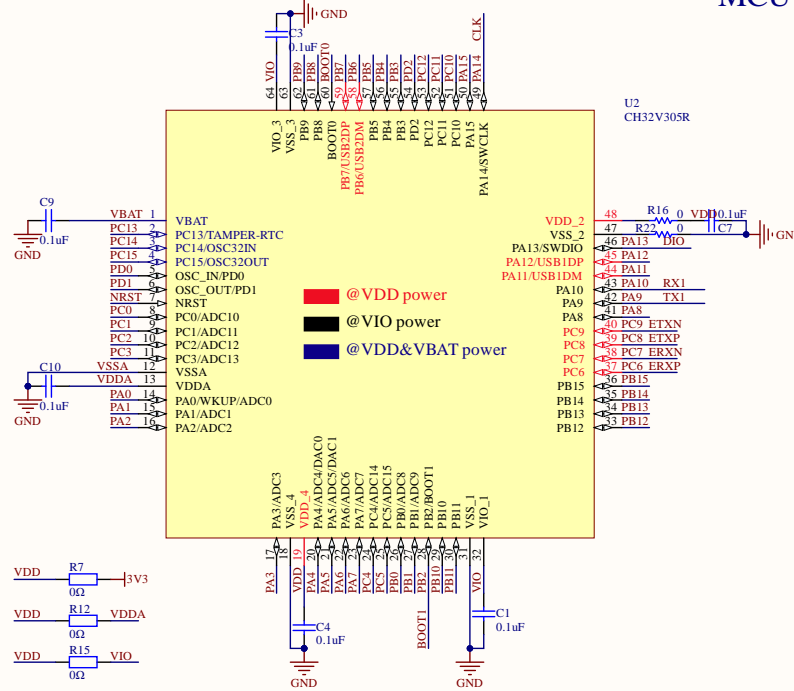
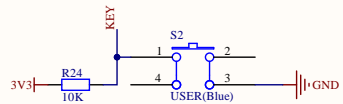
MCU



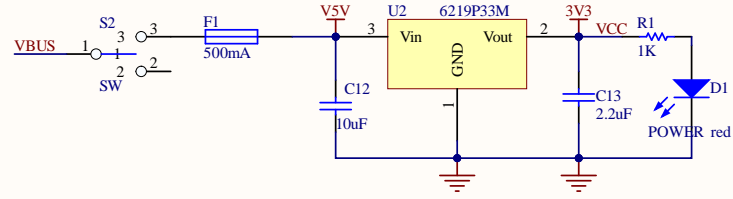
RST



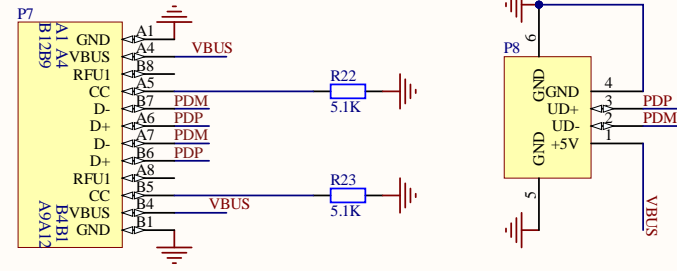
KEY



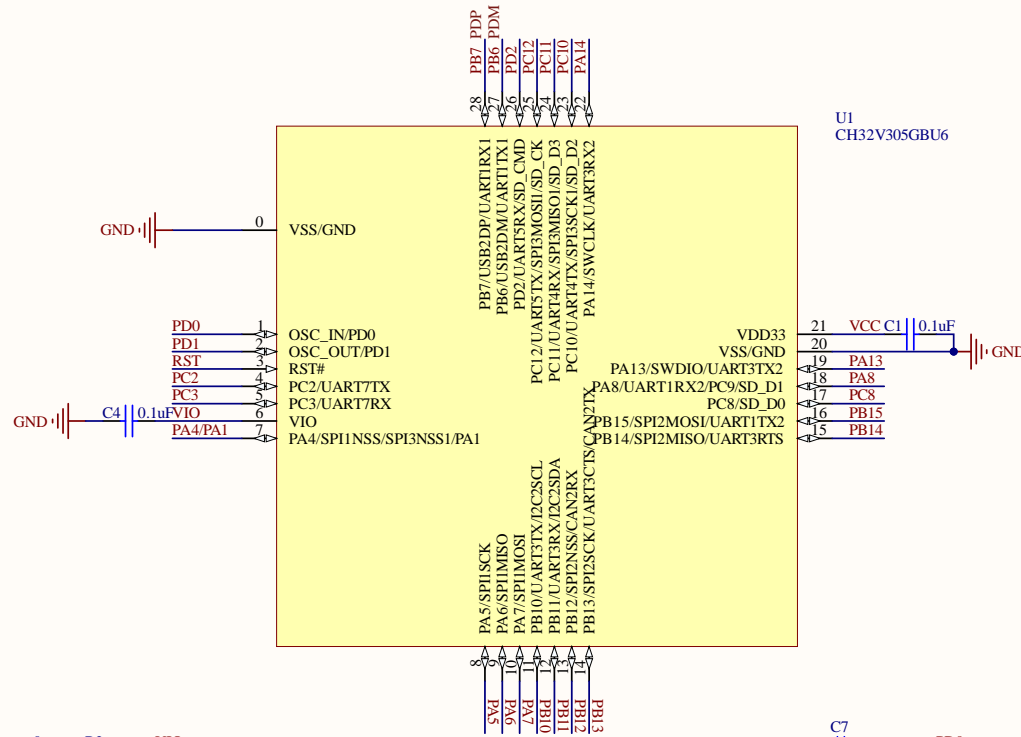
PWR



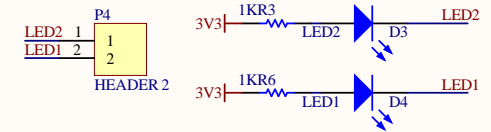
USB&PWR



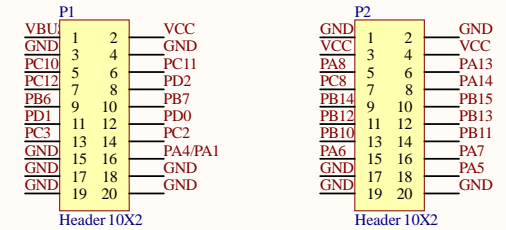
MCU



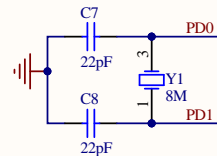
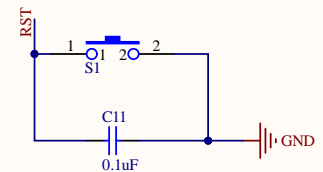
LED



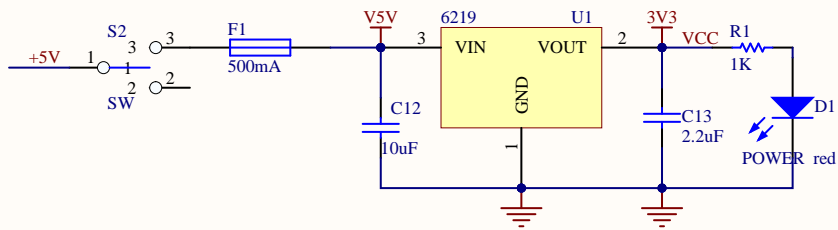
PIN



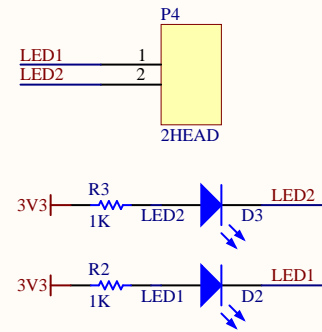
RST



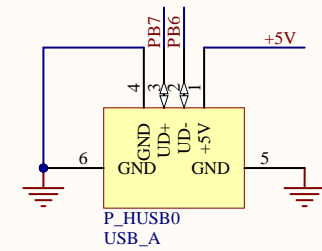
POWER



LED



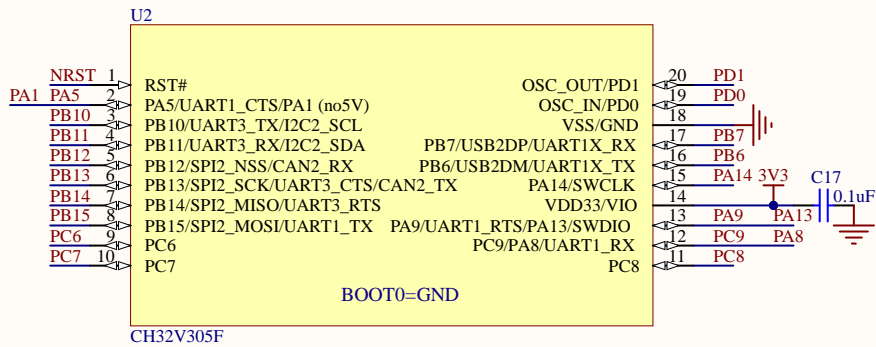
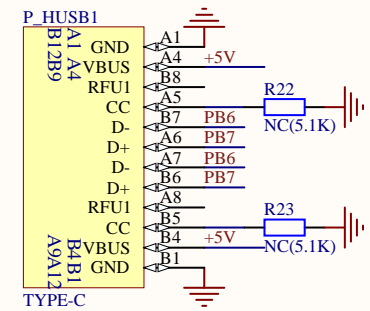
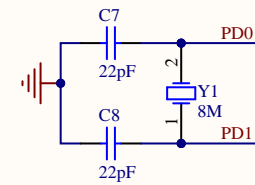
USB



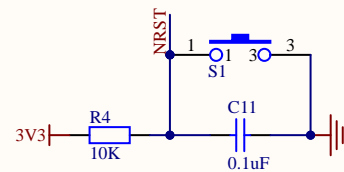
MCU

CH32V305F

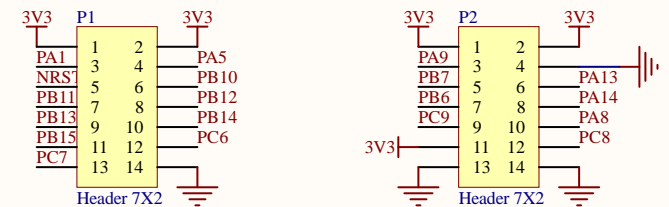
XTAL



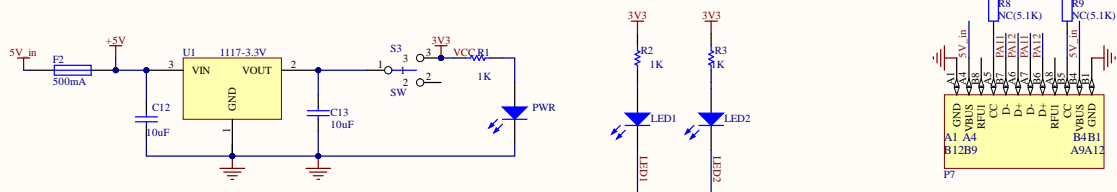
RST



PIN



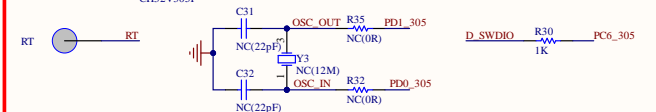
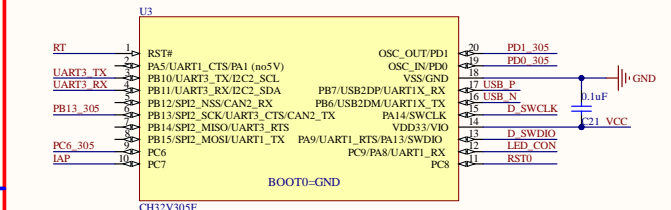
CH32V307/CH32F207/CH32V303/CH32F203VC



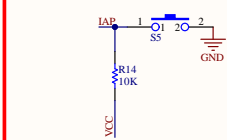
POWER&USB

WCH_LinkE

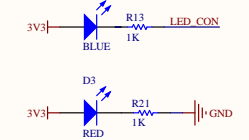
MCU



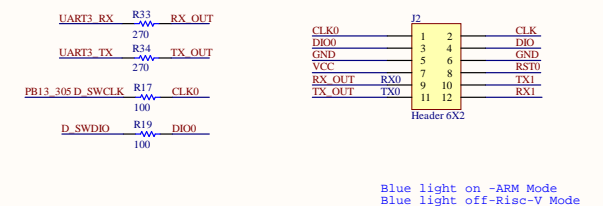
IAP



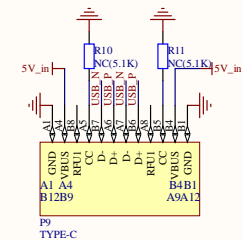
LED



SWD&UART



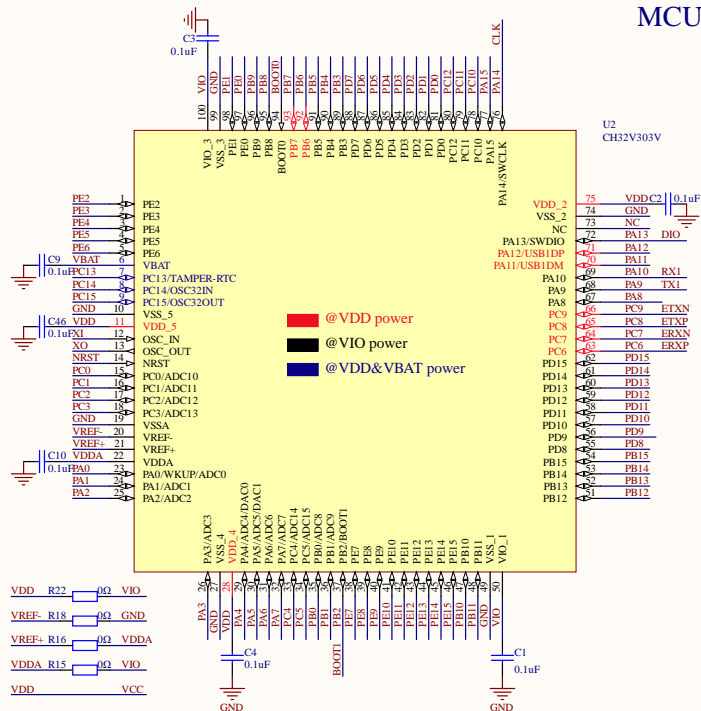
POWER&USB



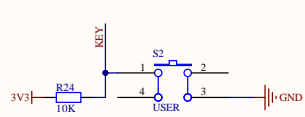
XTAL



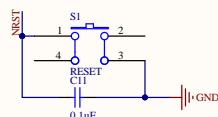
MCU



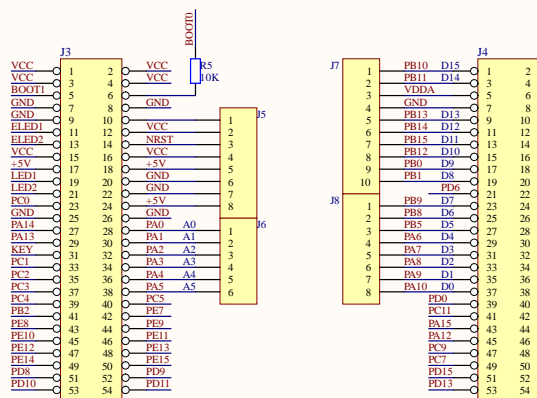
KEY



RST



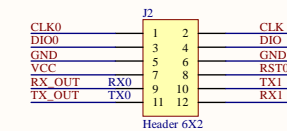
ARDUINO



CH32V307/305/303R

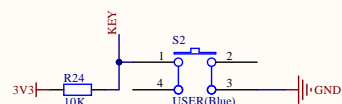


MCU

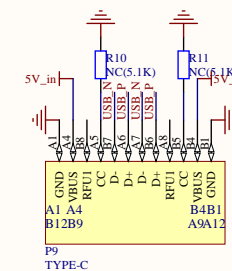


```
Blue light on -ARM Mode
Blue light off-Risc-V Mode
```

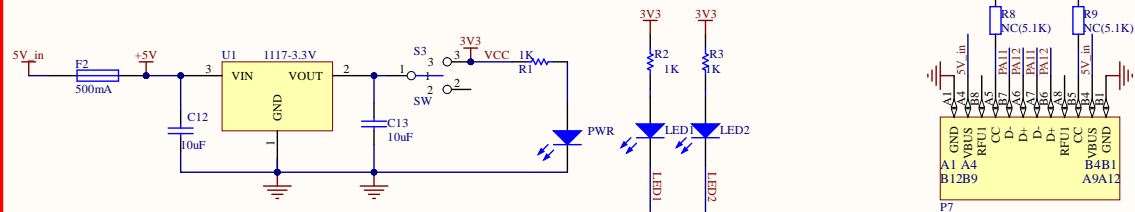
KEY



ARDUINO

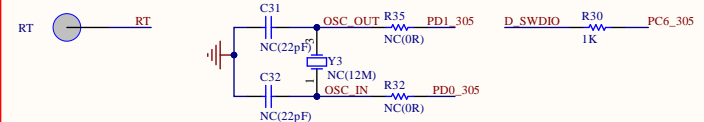
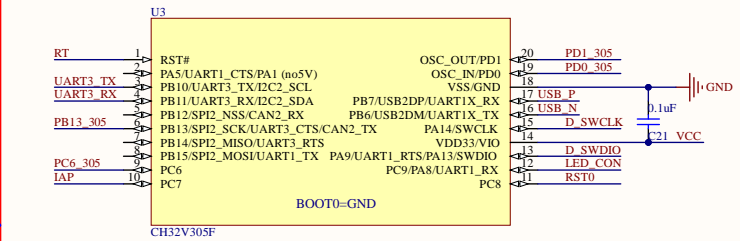


CH32V307/305/303R最小系统

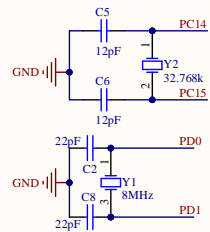


WCH_LinkE

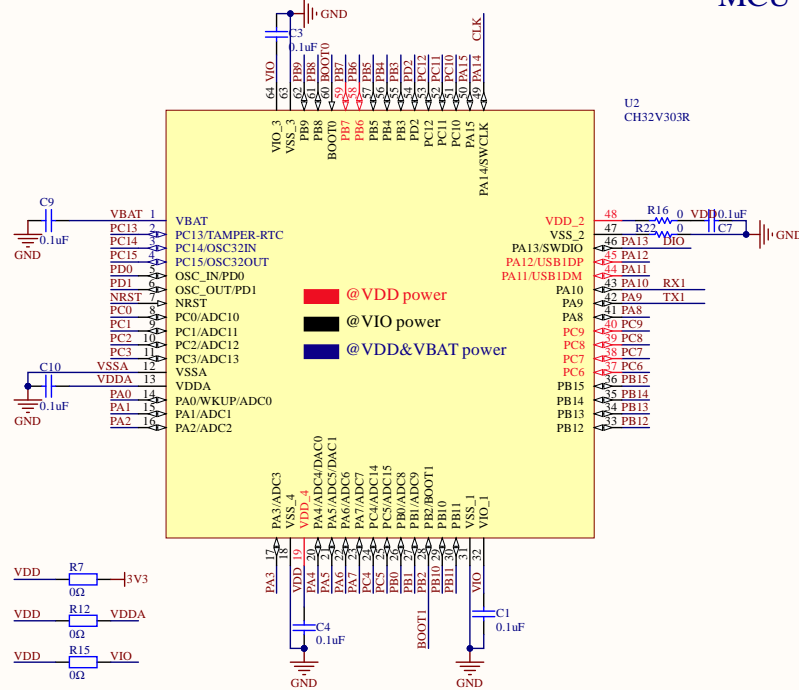
MCU



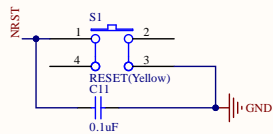
XTAL



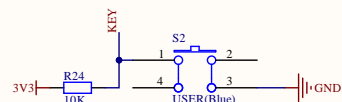
MCU



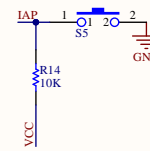
RST



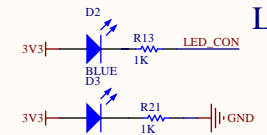
KEY



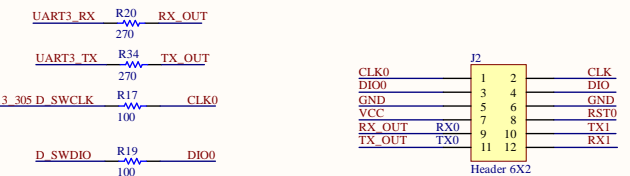
IAP



LED

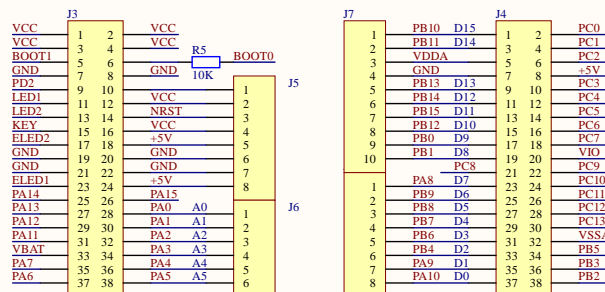


SWD&UART

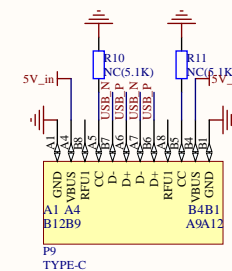


```
Blue light on -ARM Mode
Blue light off-Risc-V Mode
```

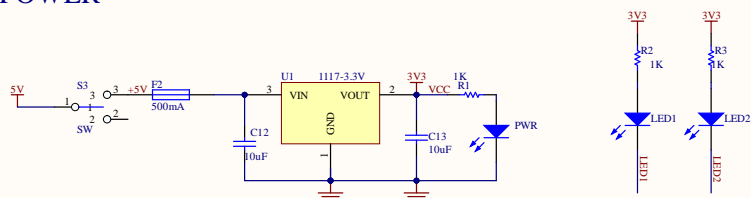
ARDUINO



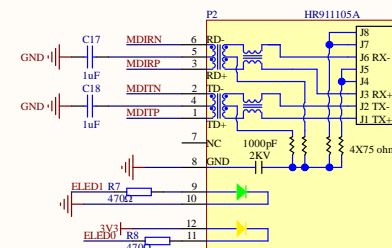
POWER&USB



POWER



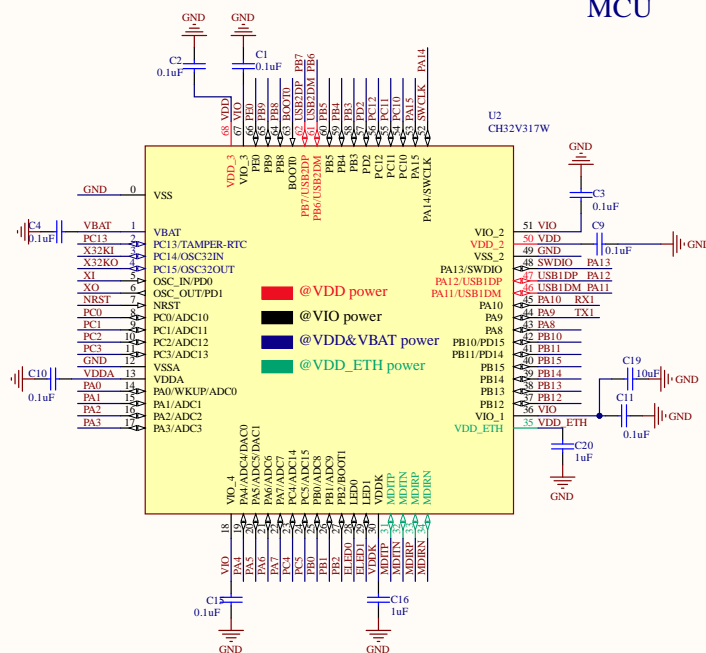
ETH



Crystals



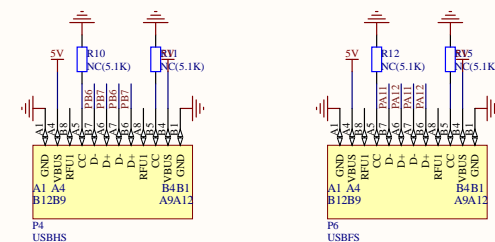
MCU



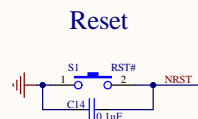
DEBUG



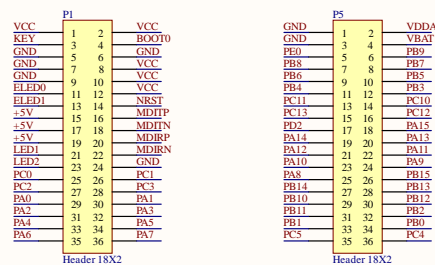
USB



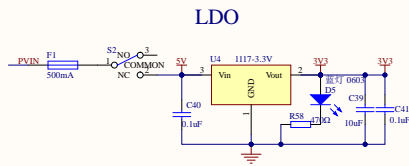
RST



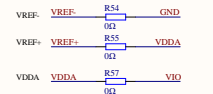
ARDUINO



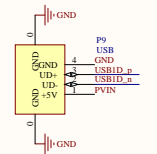
Power Supply



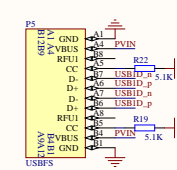
Power Input



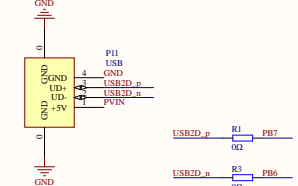
USB Full Speed



USB Full Speed Type-C

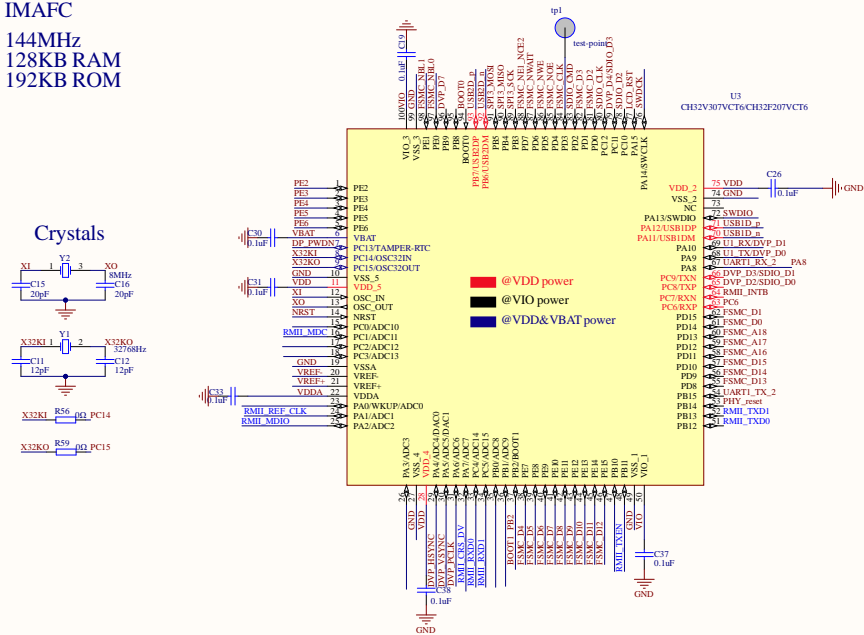


USB High Speed



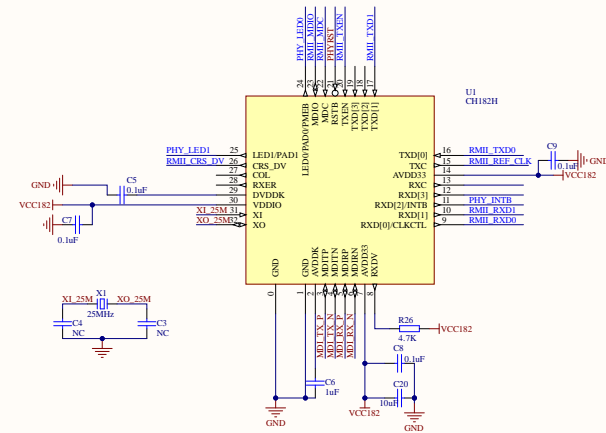
CH32V307VCT6/CH32F207VCT6

Risc-V v4f
IMAFC
144MHz
128KB RAM
192KB ROM



100M external PHY

RMII interface

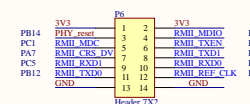


INTB function

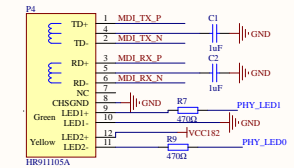
R29 Connect a 4.7K resistor to turn on the interrupt function and WOL function, at this time LED0 (pin 24) is PMEB function. Otherwise, it is LED function and LED0 is displayed normally.



RMII Interface Related IOs

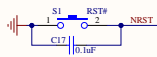


Ethernet Interface

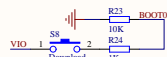


KEY

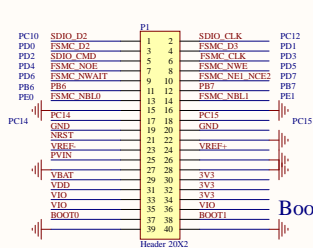
Reset



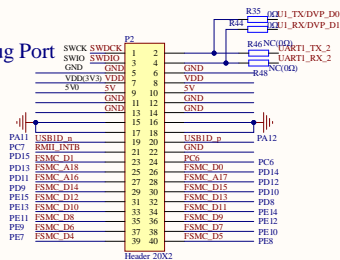
Download



IO



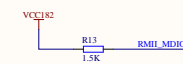
Debug Por



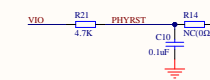
CH182 power supply



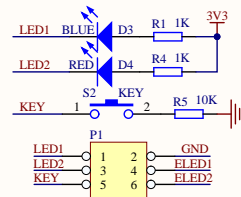
MDIO pull high



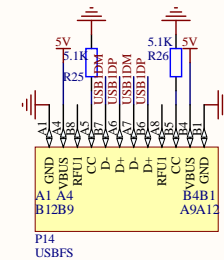
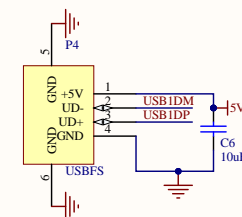
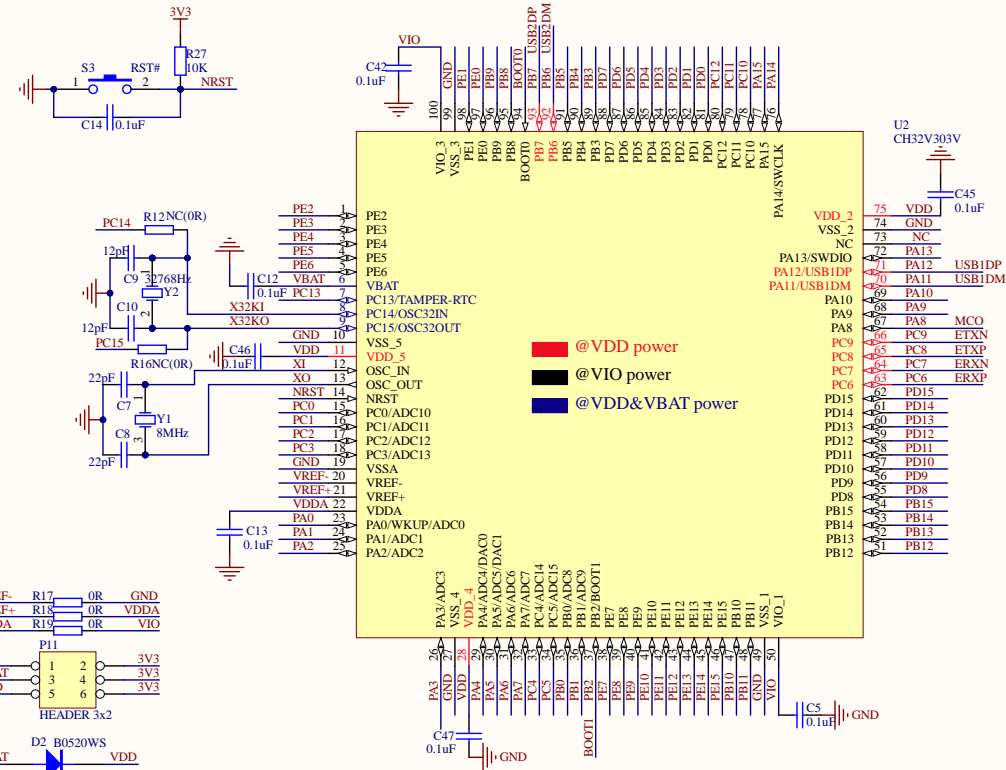
PHY Reset



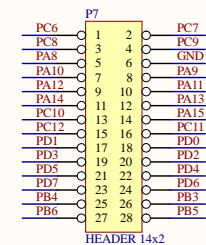
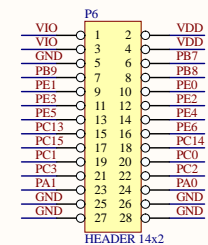
POWER



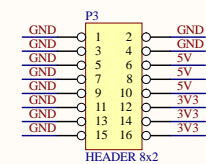
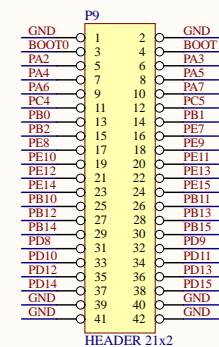
CH32xx0xV_EVT MCU



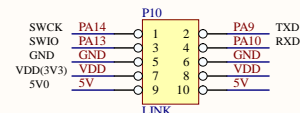
USB



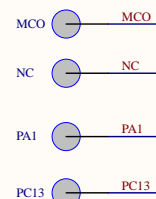
PIN



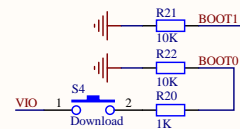
DEBUG



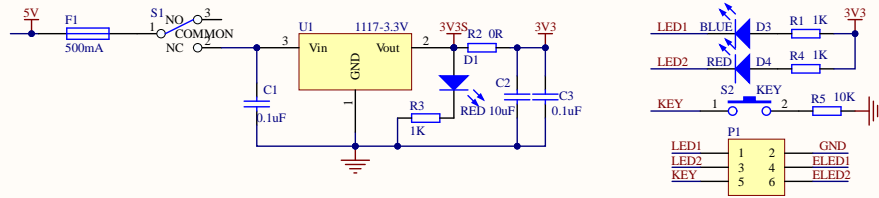
PAD



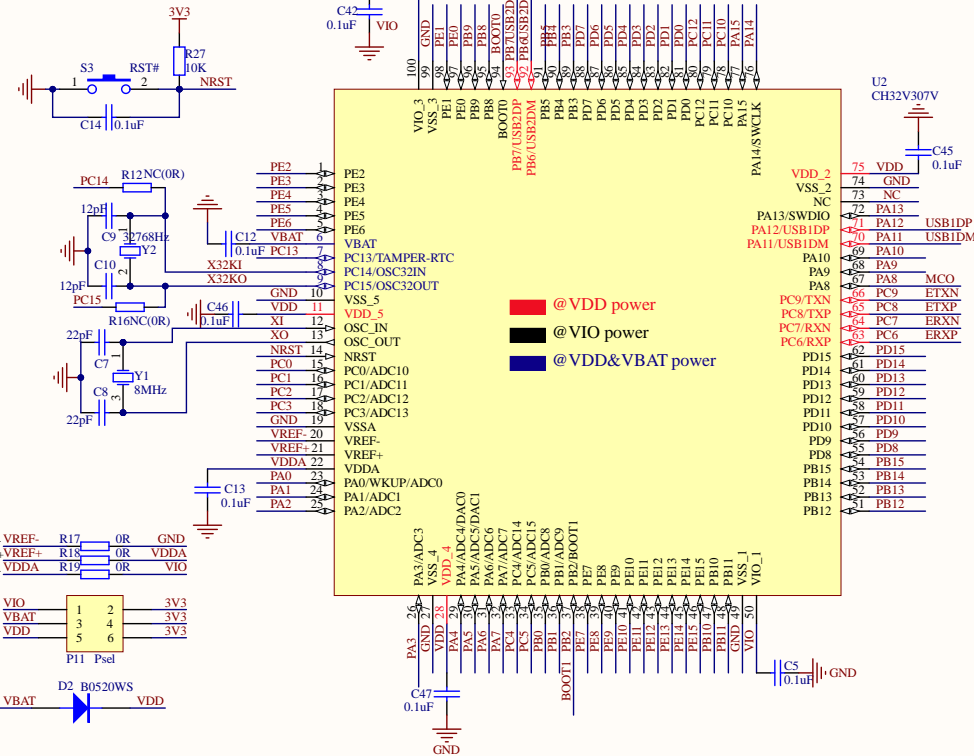
DOWNLOAD



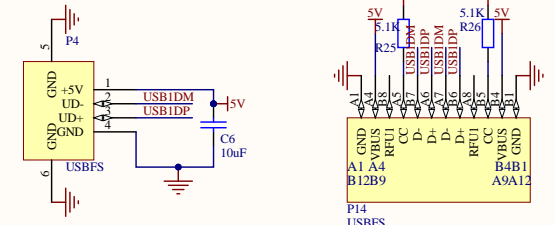
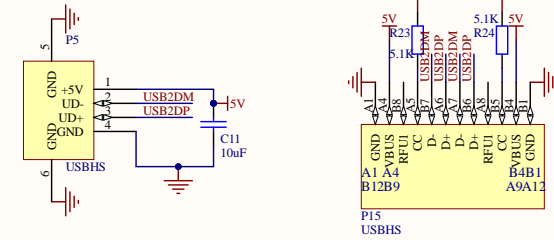
POWER



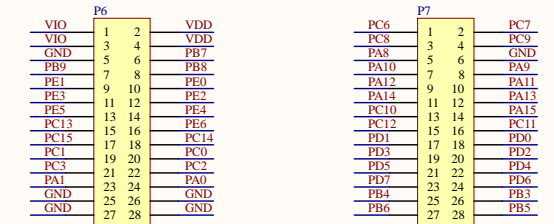
CH32V307V_EVT MCU



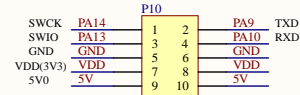
USB



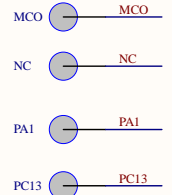
PIN



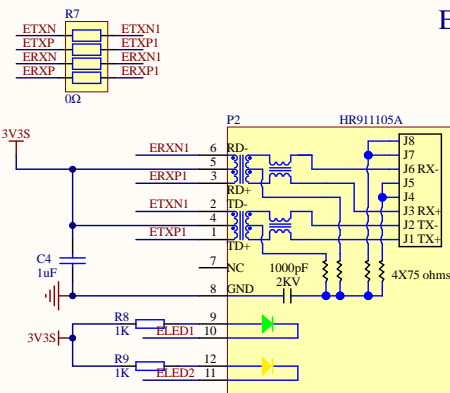
DEBUG



PAD



ETH



DOWNLOAD

